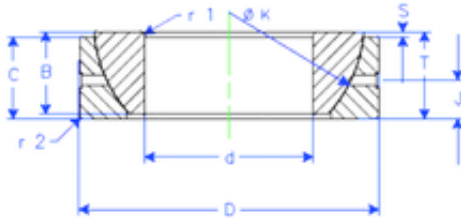




IJK BEARING COMPANY

180 mm x 280 mm x 64 mm Enduro GE 180 SX
plain bearings



GE 180 SX Bearing 2D drawings and 3D CAD models

Bearing No. GE 180 SX

Size	180x280x64 mm
Bore Diameter	180 mm
Outer Diameter	280 mm
Width	64 mm
d	180 mm
D	280 mm
T	64 mm
B	64 mm
C	61 mm
r1 min.	3 mm
r2 min.	3 mm
J	28 mm
K	260 mm
S	21 mm
Weight	17,39978912 Kg
Basic dynamic load rating (C)	1395 kN