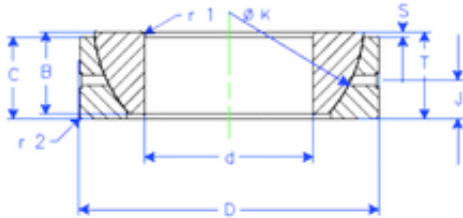




# IJK BEARING COMPANY

## 80 mm x 125 mm x 29 mm Enduro GE 80 SX plain bearings



Bearing No. GE 80 SX

Size	80x125x29 mm
Bore Diameter	80 mm
Outer Diameter	125 mm
Width	29 mm
d	80 mm
D	125 mm
T	29 mm
B	29 mm
C	26 mm
r1 min.	1,1 mm
r2 min.	1,1 mm
J	14,5 mm
K	115 mm
S	8,6 mm
Weight	1,53994484 Kg
Basic dynamic load rating (C)	258 kN

GE 80 SX Bearing 2D drawings and 3D CAD models