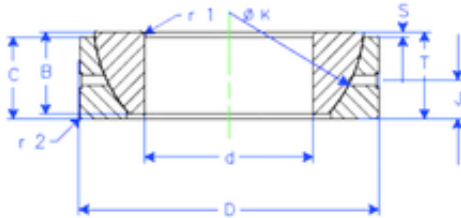




# IJK BEARING COMPANY

200 mm x 310 mm x 70 mm Enduro GE 200 SX  
plain bearings



GE 200 SX Bearing 2D drawings and 3D CAD models

Bearing No. GE 200 SX

Size	200x310x70 mm
Bore Diameter	200 mm
Outer Diameter	310 mm
Width	70 mm
d	200 mm
D	310 mm
T	70 mm
B	70 mm
C	66 mm
r1 min.	3 mm
r2 min.	3 mm
J	30 mm
K	290 mm
S	26 mm
Weight	23,79997224 Kg
Basic dynamic load rating (C)	1680 kN